

Three different software packages are included as standard

From RIP to cutting, Mimaki's software answers all professional requirements for multiple applications. In addition, easy to operate software for preparing the print & cut data is included.



**Continuous printing & cutting**  
RasterLink Pro 4 SG

Cutting data prepared in Illustrator (FineCut) can be combined with the associated printing data. Afterwards the CJV-30 starts consecutive print and cut operations. 16-bit rendering without tone jumps and white overlay printing, among other functions, help to produce higher image quality.



**Higher cutting accuracy**  
Fine Cut 7 for Illustrator

Plug-in cutting software for Illustrator CS3. Highly sophisticated requirements such as contour cutting are enabled. Furthermore tiling/nesting as well as large products can be accommodated.



**Print & Cut made easy for everyone**  
Simple Studio

No previous experience of Illustrator is required for generation of vivid and creative stickers. Cut lines for the printed image are automatically generated by using the graphics and photo data. The software includes functions such as gradation settings etc.

■ Specifications

Item	Specifications				
	CJV30-60	CJV30-100	CJV30-130	CJV30-160	
Maximum print/cut width	610 mm (24.0")	1,020 mm (40.1")	1,361 mm (53.5")	1,610 mm (63.3")	
Print resolution	540 dpi, 720 dpi, 1440 dpi				
Print mode (Scan x Feed)	540 x 720 dpi, 540 x 900 dpi, 540 x 1080 dpi 720 x 540 dpi, 720 x 720 dpi, 720 x 1080 dpi, 720 x 1440 dpi 1440 x 1440 dpi				
Ink	Kind Exclusive solvent ink: SS21 ink, ES3 ink				
	Capacity	4-color mode: 440 cc cartridge x 2/color, 880 cc/color 6-color mode: 440 cc cartridge x 1/color, 440 cc/color			
Media	Width	620 mm (24.4")	1,030 mm (40.5")	1,371 mm (53.9")	1,620 mm (63.7")
	Thickness	Less than 1.0 mm			
	Roll weight	Less than 25 kg (55 lbs.)			
	Roll diameter	Inside: 2 inch, 3 inch / Outside: Less than φ 180 mm (7.1")			
Maximum cutting speed	30 cm: 11.8"/s (42 cm: 1 6.5"/s at the angle of 45)				
Cutting force	10-350 g				
Applicable tools	Cutter, Water based ball-point pen, Oil based ball-point pen				
Media cutting	Cutting in Y direction by cutter on the head				
Media heater	Pre/print/post heater				
Media take-up device	Roll take-up device (Standard), inside/outside selectable				
Command	MRL-III, MGL-IIc2				
Interface	USB 2.0				
Applicable standard	VCCI class A, FCC class A, UL60950, CE Marking (EMC directive, low voltage directive), CB report				
Power	AC100V~240V, Less than 1,380VA				
Operation environments	20°C ~35°C, 35~65%Rh (No condensation)				
Dimensions (W×D×H)	1,524 × 739 × 1,424 mm (60" × 29.1" × 56.0")	1,934 × 739 × 1,424 mm (76.1" × 29.1" × 56.0")	2,289 × 739 × 1,424 mm (90.1" × 29.1" × 56.0")	2,538 × 739 × 1,424 mm (99.9" × 29.1" × 56.0")	
Weight	110 kg (242 lbs.)	130 kg (286 lbs.)	145 kg (319 lbs.)	160 kg (352 lbs.)	



**SS21 ink**  
This fast drying ink enables immediate cutting after printing. By using the fast drying SS21 solvent ink, the media can be cut directly after printing. Of course, the ink will not peel off during the cutting process.



**White ink (SS21 ink)**  
Mimaki's exclusive "White ink Overlay print" allows for simultaneous white and full color printing and creates a beautiful finish with accurate overlay.



**ES3 ink**  
Virtually odorless and user-friendly ink that does not require any special ventilation.

■ Options

Model	Item	Item No.
CJV30-60	Drying and exhaust unit 60	OPT-J0177
	Static cling prevention net 60	OPT-J0187
	Front cover 60C	OPT-J0185
	Sheet basket 60	OPT-J0191
CJV30-100	Drying and exhaust unit 100	OPT-J0176
	Static cling prevention net 100	OPT-J0186
	Front cover 100C	OPT-J0184
	Sheet basket 100	OPT-J0190
CJV30-130	Drying and exhaust unit 130	OPT-J0129
	Static cling prevention net 130	OPT-J0139
	Front cover 130C	OPT-J0183
	Sheet basket 130	OPT-J0189
CJV30-160	Drying and exhaust unit 160	OPT-J0130
	Static cling prevention net 160	OPT-J0140
	Front cover 160C	OPT-J0182
	Sheet basket 160	OPT-J0188

■ Supplies

Item	Item No.
SS21 solvent ink	440 cc SPC-0501Y/M/C/K/Lm•Lc
	220 cc SPC-0504W
ES3 eco solvent ink	440 cc SPC-0440Y/M/C/K/Lm•Lc
Wiper kit 33S	10 pcs SPA-0134
Waste ink bottle 2L	1 pc SPA-0117
Cutter blade assy	1 pc SPA-0107
MS cleaning cartridge	220 cc SPC-0294
Cutter holder (standard accessory)	1 pc SPA-0001
Cutter holder	1 pc SPA-0090
Standard blade for vinyl	3 pcs SPB-0030
Blade for vinyl and paper	3 pcs SPB-0001
Blade for small character	3 pcs SPB-0003
Blade for reflective sheet	2 pcs SPB-0006
Blade for fluorescent type vinyl	3 pcs SPB-0007



CJV30-160 equipped with a drying and exhaust unit 160

●Some of the samples in this catalogue are artificial renderings. ●Specifications, design and dimensions stated in this catalogue may be subject to change without prior notice. (for technical improvements, etc.). ●The corporate names and merchandise names written on this catalogue are the trademark or registered trademark of the respective corporations. ●Inkjet printers print using extremely fine dots, so colors may vary slightly after replacement of the print heads. Also note that if using multiple printer units, colors could vary slightly from one unit to other unit due to slight individual differences.

**MIMAKI ENGINEERING CO., LTD.**  
2182-3 Shigeno-otsu, Tomi-city, Nagano 389-0512, Japan  
Tel: +81-268-78-2288  
trading@mimaki.jp www.mimaki.co.jp

**MIMAKI USA, INC.**  
150 Satellite Boulevard, suite A, Suwanee, Georgia 30024, U.S.A.  
Atlanta +1-888-530-3988 Boston +1-888-530-3986  
Los Angeles +1-888-530-3987 Chicago +1-888-530-3985  
www.mimakiusa.com

**MIMAKI EUROPE B.V.**  
Stammerdijk 7E,  
1112 AA Diemen, The Netherlands  
Tel: +31-20-4627-640  
www.mimakieurope.com

printed in Japan DB10283-01

Printer Cutter **NEW**  
**CJV30 Series**  
CJV30-60/100/130/160



**Print & Cut**



Printing is my job

Cutting is my job



# Expand and shape your ideas with ease

Could this job be more attractive? How to paint and shape the town?  
 Need more design freedom to convert innovative ideas into a more impressive designs and shapes.  
 Showroom windows, shops, buildings, streets and automobiles, the city's landscape is the canvas for your imagination.  
 Conceptualize, print & cut, the new way to shape everything anew. Everybody is attracted to this exciting new world!  
 Live up your daily life, decorate the street. Bring your creativity to life.

# Print-Cut



## Easy production of seals, labels and stickers.

Basis

Creative seals, labels and stickers  
 Simple production of highly detailed A1 posters, promotional prints and POP displays.

CJV30-60 is designed to fulfill these requirements.  
 The printing width of 60 cm (23.6") offers print service providers unmatched performance, productivity and efficiency in small format print.  
 What's more, the CJV30-60 comes at an attractive and very competitive price. The print and cut entry device.

**CJV30-60** 0.6 m (23.6") width

CJV30-60 is recommended for

- Seals, labels and sticker makers
- Print service providers who want to enter the print and cut market



## Fast generation of A0 size posters and POP displays.

Advanced

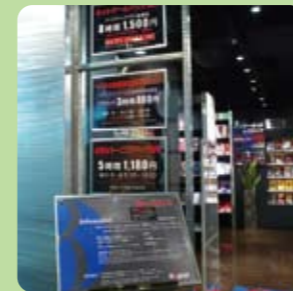
Immediately upon receipt of a customer's order, A0 size posters and POPs can be generated.  
 The ideal machine for over the counter direct services.  
 An indispensable printer-cutter with a small footprint, compact design and high quality output.

If your requirements fit the above, then now is the time to consider the CJV30-100.  
 With fast drying solvent ink, cutting is performed immediately after printing.  
 Ideally suited for the businesses requiring both high quality and quick response.

**CJV30-100** 1.0 m (39.3") width

CJV30-100 is recommended for

- Print service providers offering over the counter direct services
- Print service providers needing print and cut output of POP displays and up to A0 posters



## Print service providers engaged in printing of large sized signage and vehicle markings.

Generation of vivid, brilliant images for POP, sign and vehicle markings all over the town and noticed by everyone.

If this description fits your shop, then a printer-cutter for wider sizes is recommended.  
 The CJV30-130 and CJV30-160 are designed for print service providers requiring both high quality and bigger print areas of up to 130 cm (51") and 160 cm (63") respectively.  
 The optimum solution for businesses requiring detailed vivid large format images for a multitude of applications all around the town.

**CJV30-130** 1.3 m (51.1") width **CJV30-160** 1.6 m (63") width

CJV30-130/160 is recommended for

- Print service providers engaged in signboard and vehicle wrap printing



Enhances efficiency!

Outstanding accuracy and image quality!

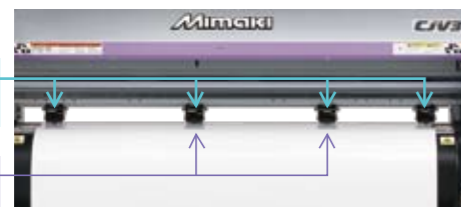
Printing with fast drying ink and immediate cutting after printing. Automatic switching between printing and cutting. Mimaki's unique state-of-the-art technology drastically improves productivity and profitability.

### Fast drying ink enables cutting immediately after printing

SS21 Solvent ink  
 SS21 solvent ink contains volatile dispersing pigments and features fast drying. This enables immediate cutting after printing. Mimaki's SS21 ink does not peel off when cut.

### Substantial reduction of manual operations

Automatic Media Clamp function  
 The number of pinch rollers and their clamp pressures can be set from RIP software and pinch roller pressures automatically changed according to media. By raising the intermediate pinch rollers on both sides at the time of cutting, media peel-off after cutting is eliminated. Enables unattended operation without manual intervention from start of printing to finished cutting.



The number of pinch rollers and clamp pressures suitable for printing and cutting can be set from RIP

Print rollers in the middle are up when cutting.

CJV30 automatically adjusts to ensure accurate media feed. This results in high quality finishing of both, print and cut.

### High precision contour cutting

Continuous crop mark detection function  
 A photo-sensor on the cutting head automatically reads the registration marks on the print to precisely position the cutter automatically. Even with a laminated print, contour cutting is performed with great accuracy.

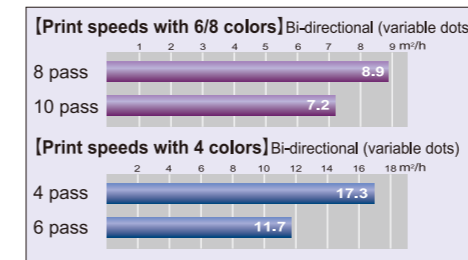
### Continuous unattended operation is made possible

UISS (Uninterrupted Ink Supply System)  
 When the ink cartridge runs out, another cartridge automatically begins to supply ink. Ink cartridges can be replaced during printing and overnight continuous printing is possible.

\* UISS only works in 4 color mode

### High speed for reduced delivery times

High speed printing at maximum 17.3 m<sup>2</sup>/h  
 High speed printing at a maximum speed of 17.3 m<sup>2</sup>/h (540 × 720 dpi, 4 colors) and in standard mode at 11.7 m<sup>2</sup>/h (540 × 1080 dpi, 4 colors). The symmetrical ink cartridge arrangement enables reliable and detailed high quality image generation even with bidirectional printing.



### More vivid full color printing with white ink base coat

Mimaki's unique white ink overlay print function  
 Mimaki's white ink overlay feature enables simultaneous printing of colors and white ink. By overlaying the white ink on the substrate, more brilliant color is made possible, especially when printing on transparent media, resulting in even more vivid images.



### Generation of vivid and brilliant images

High quality prints with a maximum resolution of up to 1440 dpi  
 Highest resolution print output at 1440 dpi with three different dot sizes. Generation of smooth and beautiful images without graining, even when printing in four color mode.

